



NAVIGATE FINANCIAL

Charting Your Journey



Nancy LaPointe, CFP®, ChFC®, CLU®, RICP®
Financial Planner, Wealth Manager
Navigate Financial
3663 College St. SE, Ste. B
Lacey, WA 98503
360-628-8175
nancy@navigatefinancialnw.com
navigatefinancialnw.com



NAVIGATE FINANCIAL
Charting Your Journey

Greetings,

The sunshine will be returning to us soon. We are all looking forward to feeling the warmth of the sun. Yard work is calling. I look forward to getting out my power washer for the house and the office in May. I do not typically go for immediate gratification; the exception is power washing which makes me happy to see the patio and sidewalks clean in just seconds.

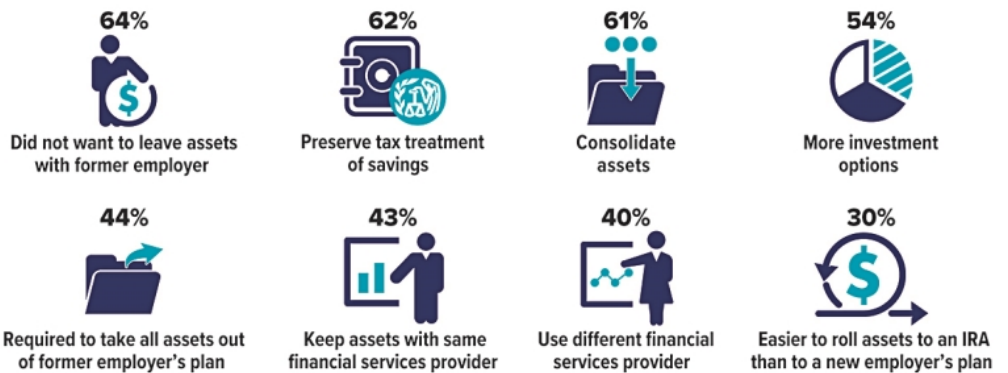
The newsletter articles chosen are meant to provide insight and information on a variety of topics. Feel free to share these articles with others. In fact, we have diverse resources available for you. If you are interested in a specific topic please reach out.

As you are getting excited about summer and drier days, remember to be intentional in this short season, as we were intentional in the planning of your successful retirement. Life is a balancing act. When we move with intention, we can achieve our goals. Stay safe and engaged.

Reasons to Roll

When you leave your job or retire, you have an opportunity to manage your funds in an employer-sponsored retirement plan such as a 401(k), 403(b), or government 457(b) plan. Depending on the situation, you generally have four options.* The approach that typically gives you the most control over the funds is to transfer some or all of the assets to an IRA through a rollover.

Three out of five households who owned traditional IRAs in 2022 had executed at least one IRA rollover from an employer-sponsored retirement plan. These were the top reasons for the most recent rollover.



*Other options may include leaving assets in the former employer's plan, transferring assets to a new employer-sponsored plan, or withdrawing the money.

Source: Investment Company Institute, 2023 (multiple responses allowed)

How Taxes Impact Your Retirement-Income Strategy

Retirees face several unique challenges when managing their income, particularly when it comes to taxes. From understanding how taxes relate to Social Security and Medicare to determining when to tap taxable and tax-advantaged accounts, individuals must juggle a complicated mix of factors.

Social Security and Medicare

People are sometimes surprised to learn that a portion of Social Security income becomes federally taxable when combined income exceeds \$25,000 for single taxpayers and \$32,000 for married couples filing jointly. The taxable portion is up to 85% of benefits, depending on income and filing status.¹

In addition, the amount retirees pay in Medicare premiums each year is based on the modified adjusted gross income (MAGI) from *two years earlier*. In other words, the cost retirees pay for Medicare in 2023 is based on the MAGI reported on their 2021 returns.

Taxable, Tax-Deferred, or Tax-Free?

Maintaining a mix of taxable, tax-deferred, and tax-free accounts offers flexibility in managing income each year. However, determining when and how to tap each type of account and asset can be tricky. Consider the following points:

Taxable accounts. Income from most dividends and fixed-income investments and gains from the sale of securities held 12 months or less are generally taxed at federal rates as high as 37%. By contrast, qualified dividends and gains from the sale of securities held longer than 12 months are generally taxed at lower capital gains rates, which max out at 20%.

Tax-deferred accounts. Distributions from traditional IRAs, traditional work-sponsored plans, and annuities are also generally subject to federal income tax. On the other hand, company stock held in a qualified work-sponsored plan is typically treated differently. Provided certain rules are followed, a portion of the stock's value is generally taxed at the capital gains rate, no matter when it's sold; however, if the stock is rolled into a traditional IRA, it loses this special tax treatment.²

Tax-free accounts. Qualified distributions from Roth accounts and Health Savings Accounts (HSAs) are tax-free and therefore will not affect Social Security taxability and Medicare premiums. Moreover, some types of fixed-income investments offer tax-free income at the federal and/or state levels.³

The Impact of RMDs

One income-management strategy retirees often follow is to tap taxable accounts in the earlier years of retirement in order to allow the other accounts to continue benefiting from tax-deferred growth. However, traditional IRAs and workplace plans cannot

grow indefinitely. Account holders must begin taking minimum distributions after they reach age 73 (for those who reach age 72 after December 31, 2022). Depending on an account's total value, an RMD could bump an individual or couple into a higher tax bracket. (RMDs are not required from Roth IRAs and, beginning in 2024, work-based plan Roth accounts during the primary account holder's lifetime.)

Don't Forget State Taxes

State taxes are also a factor. Currently, seven states impose no income taxes, while New Hampshire taxes dividend and interest income and Washington taxes the capital gains of high earners. Twelve states tax at least a portion of a retiree's Social Security benefits.

Eye on Washington

Finally, both current and future retirees will want to monitor congressional actions over the next few years. That's because today's historically low marginal tax rates are scheduled to revert to higher levels in 2026, unless legislation is enacted (see table).

Help Is Available

Putting together a retirement-income strategy that strives to manage taxes is a complex task indeed. Investors may want to seek the help of a qualified tax or financial professional before making any final decisions.⁴

Tax Rates Scheduled to Rise

Unless legislation is enacted, federal marginal income tax rates are scheduled to rise in 2026.

Current rate	2026
10%	10%
12%	15%
22%	25%
24%	28%
32%	33%
35%	35%
37%	39.6%

1) Combined income is the sum of adjusted gross income, tax-exempt interest, and 50% of any Social Security benefits received.

2) Distributions from tax-deferred accounts and annuities prior to age 59½ are subject to a 10% penalty, unless an exception applies.

3) A qualified distribution from a Roth account is one that is made after the account has been held for at least five years and the account holder reaches age 59½, dies, or becomes disabled. A distribution from an HSA is qualified provided it is used to pay for covered medical expenses (see IRS publication 502). Nonqualified distributions will be subject to regular income taxes and penalties.

4) There is no guarantee that working with a financial professional will improve investment results.

Yours, Mine, and Ours: Financial Tips for Blended Families

Combining finances can be complicated for any couple, but the challenges become more complex the second time around, especially when children are involved. Here are some ideas to consider if you are already part of a blended family or looking forward to combining households sometime soon.

Be Clear and Comprehensive

It's important to reveal all assets, income, and debts, and discuss how these should be treated in your combined family. A prenuptial agreement may seem unromantic, but it could prevent acrimony and misunderstanding if the marriage ends through divorce or the death of a spouse. If you don't want a legal agreement, have an open and honest discussion, and lay all your cards on the table. It's not too late to clarify the situation after you've tied the knot.

One of the most fundamental issues is where you and your new spouse will live. It might be more convenient — and perhaps better financially — to move into a residence that one of you already owns. But couples in a second marriage often report that moving into a new home gives them a feeling of a fresh start, which could have value that can't be measured financially.¹

Create a blueprint for short-term and long-term finances. Do you plan to combine bank accounts or keep separate accounts, perhaps with a joint account to pay shared expenses? To what accounts will each of your salaries be deposited? Will one spouse help pay off the other spouse's debts such as student loans, auto loans, and credit cards? Research suggests that remarried couples are generally happier when they pool resources, but there are many variations in how that might be carried out.²

Consider the Kids

Discuss how you plan to handle financial responsibility for children from previous marriages versus any children you have together. Are they going to be "your kids, my kids, and our kids," or are they all "our kids"? Being a stepparent and/or a divorced parent can be complex emotionally, and there are no easy answers. But there are some not-so-complex financial questions you should address up front.

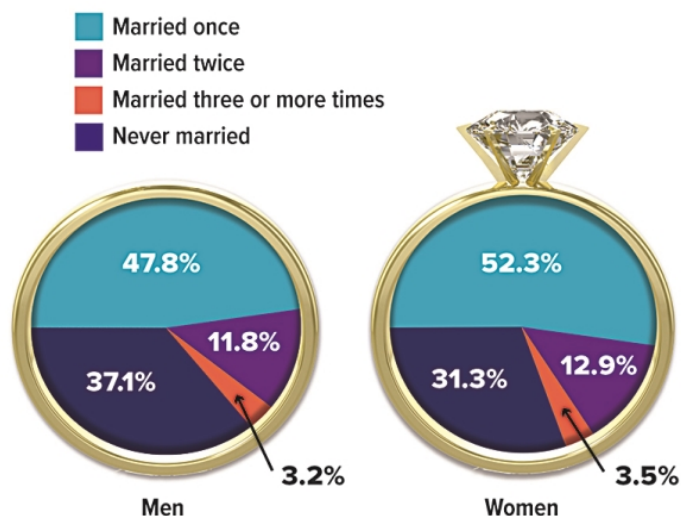
Be clear about alimony payments, child support, and other financial responsibilities. For example, what is each spouse's intention and/or legal obligation to pay college tuition costs for children from a previous marriage? Are there assets that one spouse wants to reserve for the benefit of his or her children? Is the other spouse willing to waive rights to those assets?

Communicating and planning with an ex-spouse is essential if you share custody of children. Along with

responsibilities for everyday expenses, be sure you understand and agree on other financial issues, such as who will claim the child as a beneficiary on tax returns, and who is the "custodial parent" for purposes of financial aid applications. A beneficiary deduction may be more valuable for a parent with higher earnings, but a custodial parent with lower earnings may enable a student to qualify for more financial aid.

I Do, I Do

Roughly two out of three Americans ages 15 and older have been married at least once, and a substantial number have been married more than once.



Source: U.S. Census Bureau, 2022 (2021 data)

Update Wills and Beneficiary Forms

Be sure that your will and all beneficiary forms reflect your new situation and current wishes. A will can designate heirs and facilitate distribution of assets when an estate goes through the probate process. However, the assets in most pension plans, qualified retirement accounts, and life insurance policies convey directly to the people named on the beneficiary forms — even if they are different from those named in your will — and are not subject to probate. By law, your current spouse is the beneficiary of an ERISA-governed retirement account such as a 401(k) plan. If you want to designate an ex-spouse or children from a previous marriage as account beneficiaries, you must obtain a notarized waiver from your current spouse.

Blending families can be challenging on many levels. Financial matters may be easier to deal with than personal aspects as long as you take appropriate steps to identify the issues and agree on your shared financial goals.

1–2) American Psychological Association, August 23, 2019 (most current information available)

Protecting Your Business Against the Loss of a Key Person

Have you thought about how your business would be impacted by the death or disability of you (the owner) or another key employee? It's important that you create a plan to protect your business from such a loss.

Explore Life Insurance Strategies

Have you calculated the financial impact to your business upon the loss of a key employee? Your business may need funds to replace lost profits, hire and train a replacement, provide benefits to the deceased employee's family, and fund the purchase of your interest in the business. One option is to buy employer-owned life insurance on the key employee, naming the business as the policy's beneficiary.

Consider a Disability Policy

If a key employee became disabled, how would the business continue to pay the employee during the period of disability? How would the cash flow of the business be affected? How would overhead expenses of the business be paid?

Disability insurance can provide income to a key employee during a period of disability. Business overhead expense insurance, usually owned by the business, typically provides monthly payments for a specified period of time so that your business can meet its routine expenses and remain open while the key employee is disabled.

Pay Off Business Loans

If you die unexpectedly, how will business loans be repaid? Often, small business owners have to personally guarantee business loans, which could put your personal assets in jeopardy if you die while the loan is outstanding. A business loan insurance plan could help address this issue. At the owner's death, the insurance policy proceeds are used to repay the outstanding debt, including accrued interest. Any proceeds not used for loan repayment can be used by the policy beneficiary to satisfy other financial needs that may arise from the owner's death.

As with most financial decisions, there are expenses associated with the purchase of life insurance. Policies commonly have mortality and expense charges. The cost and availability of life insurance depend on factors such as age, health, and the type and amount of insurance purchased. Any guarantees are subject to the financial strength and claims-paying ability of the insurance issuer.

A complete statement of coverage, including exclusions, exceptions, and limitations, is found only in the disability income insurance policy. It should be noted that carriers have the discretion to raise their rates and remove their products from the marketplace.

The accompanying pages have been developed by an independent third party. Commonwealth Financial Network is not responsible for their content and does not guarantee their accuracy or completeness, and they should not be relied upon as such. These materials are general in nature and do not address your specific situation. For your specific investment needs, please discuss your individual circumstances with your representative. Commonwealth does not provide tax or legal advice, and nothing in the accompanying pages should be construed as specific tax or legal advice.

Securities and advisory services offered through Commonwealth Financial Network®, Member FINRA/SIPC, a Registered Investment Adviser. Financial planning services offered by Navigate Financial, a WA Registered Investment Adviser, are separate and unrelated to Commonwealth. Fixed insurance products and services are separate from and not offered through Commonwealth.

This informational e-mail is an advertisement. To opt out of receiving future messages, follow the Unsubscribe instructions below