



NAVIGATE FINANCIAL

Charting Your Journey



Nancy LaPointe, CFP®, ChFC®, CLU®, RICP®
Financial Planner, Wealth Manager
Navigate Financial
3663 College St. SE, Ste. B • Lacey • WA • 98503
360-628-8175
nancy@navigatefinancialnw.com • navigatefinancialnw.com



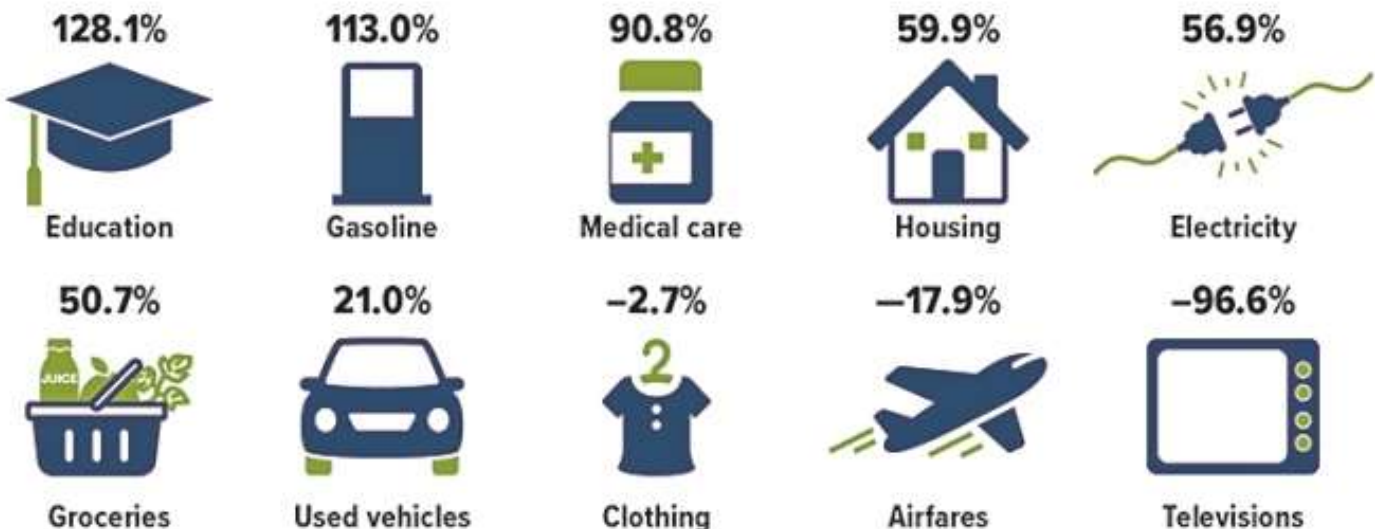
COVID has brought unexpected impacts to us all. More than ever in my experience, people are switching careers, retiring earlier, and changing homes. We enjoy helping our customers explore these changes while making informed decisions. Thank you for your referrals; we are honored to be part of your community.

I expect next year to be much of the same, and I encourage each of you to leverage the resources here at Navigate Financial. We strive to provide you with educational materials, informative presentations, and the core personal advice and analysis that relates to your actual situation. Be safe, stay connected, and remain proactive, now and into 2022. Season's Greetings!

Two Decades of Inflation

After being largely dormant for the last decade, inflation roared back in 2021 due to various factors related to the pandemic and economic recovery. For perspective, it may be helpful to look at inflation over a longer period of time. During the 20-year period ending September 2021, the Consumer Price Index for All Urban Consumers (CPI-U), often called *headline inflation*, rose a total of 53.8%. While the prices of some items tracked the broad index, others increased or decreased at much different rates.

Total price change over 20 years



Source: U.S. Bureau of Labor Statistics, 2021 (data through September 2021)

401(k) and IRA: A Combined Savings Strategy

Contributing to an employer-sponsored retirement plan or an IRA is a big step on the road to retirement, but contributing to both can significantly boost your retirement assets. A recent study found that, on average, individuals who owned both a 401(k) and an IRA at some point during the six-year period of the study had combined balances about 2.5 times higher than those who owned only a 401(k) or an IRA. And people who owned both types of accounts consistently over the period had even higher balances.¹

Here is how the two types of plans can work together in your retirement savings strategy.

Convenience vs. Control

Employer-sponsored plans such as 401(k), 403(b), and 457(b) plans offer a convenient way to save through pre-tax salary deferrals, and contribution limits are high: \$19,500 in 2021 (\$20,500 in 2022) and an additional \$6,500 if age 50 or older. Although the costs for investments offered in the plan may be lower than those offered in an IRA, these plans typically offer limited investment choices and have restrictions on control over the account.

IRA contribution limits are much lower: \$6,000 in 2021 and 2022 (\$7,000 if age 50 or older). But you can usually choose from a wide variety of investments, and the account is yours to control and keep regardless of your employment situation. If you leave your job, you can roll assets in your employer plan into your IRA.² Whereas contributions to an employer plan generally must be made by December 31, you can contribute to an IRA up to the April tax filing deadline.

Matching and Diversification

Many employer plans match a percentage of your contributions. If your employer offers this program, it would be wise to contribute at least enough to receive the full match. Contributing more would be better, but you also might consider funding your IRA, especially if the contributions are deductible (see below).

Along with the flexibility and control offered by the IRA, holding assets in both types of accounts, with different underlying investments, could help diversify your portfolio. Diversification is a method used to help manage investment risk; it does not guarantee a profit or protect against investment loss.

Rules and Limits

Although annual contribution limits for employer plans and IRAs are separate, your ability to *deduct* traditional IRA contributions phases out at higher income levels if you are covered by a workplace plan: modified adjusted gross income (MAGI) of \$66,000 to \$76,000 for single filers and \$105,000 to \$125,000 for joint filers in 2021 (\$68,000 to \$78,000 and \$109,000 to \$129,000 in 2022).³ You can make nondeductible contributions to a traditional IRA regardless of income.

Eligibility to contribute to a Roth IRA phases out at higher income levels regardless of coverage by a workplace plan: MAGI of \$125,000 to \$140,000 for single filers and \$198,000 to \$208,000 for joint filers in 2021 (\$129,000 to \$144,000 and \$204,000 to \$214,000 in 2022).

Percentage of U.S. households with tax-advantaged retirement savings accounts



Source: Investment Company Institute, 2021

Contributions to employer-sponsored plans and traditional IRAs are generally made on a pre-tax or tax-deductible basis and accumulate tax deferred. Distributions are taxed as ordinary income and may be subject to a 10% federal income tax penalty if withdrawn prior to age 59½ (with certain exceptions). Nondeductible contributions to a traditional IRA are not taxable when withdrawn, but any earnings are subject to ordinary income tax. Required minimum distributions (RMDs) from employer-sponsored plans and traditional IRAs must begin for the year you reach age 72 (70½ if you were born before July 1, 1949). However, you are generally not required to take distributions from an employer plan as long as you still work for that employer.

Roth IRA contributions are not deductible, but they can be withdrawn at any time without penalty or taxes. To qualify for the tax-free and penalty-free withdrawal of earnings, Roth IRA distributions must meet a five-year holding requirement and take place after age 59½ (with certain exceptions). Original owners of Roth IRAs are exempt from RMDs. Beneficiaries of all IRAs and employer plans must take RMDs based on their age and relationship to the original owner.

1) Employee Benefit Research Institute, 2020

2) Other options when separating from an employer include leaving the assets in your former employer's plan (if allowed), rolling them into a new employer's plan, or cashing out (usually not wise).

3) If you are not covered by a workplace plan but your spouse is covered, eligibility phases out at MAGI of \$198,000 to \$208,000 for joint filers in 2021 (\$204,000 to \$214,000 in 2022).

Charitable Giving Can Be a Family Affair

As families grow in size and overall wealth, a desire to "give back" often becomes a priority. Cultivating philanthropic values can help foster responsibility and a sense of purpose among both young and old alike, while providing financial benefits. Charitable donations may be eligible for income tax deductions (if you itemize) and can help reduce capital gains and estate taxes. Here are four ways to incorporate charitable giving into your family's overall financial plan.

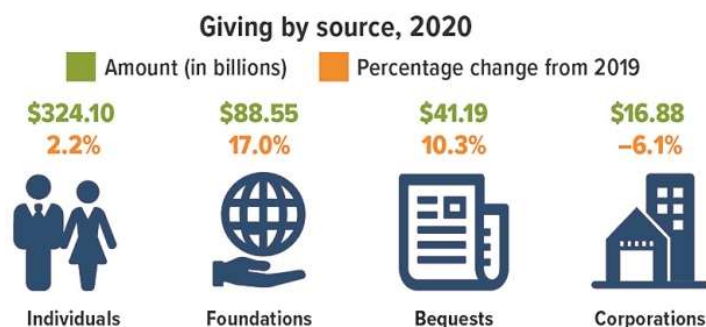
Annual Family Giving

The holidays present a perfect opportunity to help family members develop a giving mindset. To establish an annual family giving plan, first determine the total amount that you'd like to donate as a family to charity. Next, encourage all family members to research and make a case for their favorite nonprofit organization, or divide the total amount equally among your family members and have each person donate to his or her favorite cause.

When choosing a charity, consider how efficiently the contribution dollars are used — i.e., how much of the organization's total annual budget directly supports programs and services versus overhead, administration, and marketing. For help in evaluating charities, visit the Charity Navigator web site, [charitynavigator.org](https://www.charitynavigator.org), where you'll find star ratings and more detailed financial and operational information.

Snapshot of 2020 Giving

Despite the pandemic and economic downturn, 2020 was the highest year for charitable giving on record, reaching \$471.44 billion. Giving to public-society benefit organizations, environmental and animal organizations, and human services organizations grew the most, while giving to arts, culture, and humanities and to health organizations declined.



Source: Giving USA 2021

Estate Planning

Charitable giving can also play a key role in an estate plan by helping to ensure that your philanthropic wishes are carried out and potentially reducing your estate tax burden.

The federal government taxes wealth transfers both during your lifetime and at death. In 2021, the federal gift and estate tax is imposed on lifetime transfers exceeding \$11,700,000, at a top rate of 40%. States may also impose taxes but at much lower thresholds than the federal government.

Ways to incorporate charitable giving into your estate plan include will and trust bequests; beneficiary designations for insurance policies and retirement plan accounts; and charitable lead and charitable remainder trusts. (Trusts incur upfront costs and often have ongoing administrative fees. The use of trusts involves complex tax rules and regulations. You should consider the counsel of an experienced estate planning professional and your legal and tax professionals before implementing such strategies.)

Donor-Advised Funds

Donor-advised funds offer a way to receive tax benefits now and make charitable gifts later. A donor-advised fund is an agreement between a donor and a host organization (the fund). Your contributions are generally tax deductible, but the organization becomes the legal owner of the assets. You (or a designee, such as a family member) then advise on how those contributions will be invested and how grants will be distributed. (Although the fund has ultimate control over the assets, the donor's wishes are generally honored.)

Family Foundations

Private family foundations are similar to donor-advised funds, but on a more complex scale. Although you don't necessarily need the coffers of Melinda Gates or Sam Walton to establish and maintain one, a private family foundation may be most appropriate if you have a significant level of wealth. The primary benefit (in addition to potential tax savings) is that you and your family have complete discretion over how the money is invested and which charities will receive grants. A drawback is that these separate legal entities are subject to stringent regulations.

These are just a few of the ways families can nurture a philanthropic legacy while benefitting their financial situation. For more information, contact your financial professional or an estate planning attorney.

Bear in mind that not all charitable organizations are able to use all possible gifts, so it is prudent to check first. The type of organization you select can also affect the tax benefits you receive.

All investing involves risk, including the possible loss of principal, and there is no guarantee that any investment strategy will be successful.

Four Basic Principles of Financial Literacy

It is widely recognized that financial literacy impacts a person's overall economic success. In fact, studies have shown that individuals who are exposed to economic and financial education at an early age are more likely to exhibit positive financial behaviors when they are older (e.g., maintaining high credit scores, accumulating wealth). As a result, many states are requiring high school students to take a course in either economics or personal finance before they graduate.¹

Whether you are just starting out and beginning to manage your own finances or simply want to stay on top of your current financial situation, it's important to always keep these basic principles of financial literacy in mind.

1. Create a budget and stick with it. A budget helps you stay on track with your finances. Start by identifying your income and expenses. Next, compare the two totals to make sure you are spending less than you earn. Hopefully, your budget is still on the right track. If you find that your expenses outweigh your income, you'll need to make some adjustments. Finally, while straying from your budget from time to time is normal, once you have a solid budget in place it's important to try to stick with it.

2. Set financial goals. Setting goals is an important part of life, particularly when it comes to your finances. Short-term goals may include saving for a new car or

building an emergency fund, while long-term goals may take more time to achieve (e.g., saving for a child's education or retirement). Over time, your personal or financial circumstances will most likely change, so you'll need to be ready to make adjustments and reprioritize your goals as needed.

3. Manage your credit and debt. Reducing debt is part of any healthy financial plan. Whether you have student loan debt, an auto loan, and/or a credit-card balance, you'll want to pay it down as quickly as possible. Start by tracking all of your balances while being mindful of interest rates and hidden fees. Next, optimize your repayments by paying off any high-interest debt first and/or taking advantage of a debt consolidation/refinancing program.

4. Protect yourself. When it comes to insurance coverage, are you adequately protected? Having the appropriate amount of insurance to help protect yourself against possible losses is an important part of any financial strategy. Your insurance needs will depend on your individual circumstances and can change over time. As a result, you'll want to make sure your coverage properly aligns with your income and family/personal circumstances.

¹ 2020 Survey of the States, Council for Economic Education

The accompanying pages have been developed by an independent third party. Commonwealth Financial Network is not responsible for their content and does not guarantee their accuracy or completeness, and they should not be relied upon as such. These materials are general in nature and do not address your specific situation. For your specific investment needs, please discuss your individual circumstances with your representative. Commonwealth does not provide tax or legal advice, and nothing in the accompanying pages should be construed as specific tax or legal advice.

Securities and advisory services offered through Commonwealth Financial Network®, Member FINRA/SIPC, a Registered Investment Adviser. Financial planning services offered by Navigate Financial, a WA Registered Investment Adviser, are separate and unrelated to Commonwealth. Fixed insurance products and services are separate from and not offered through Commonwealth.

This informational e-mail is an advertisement. To opt out of receiving future messages, follow the Unsubscribe instructions below